

# 600AJ

## ARTICULATING BOOM LIFT



### Performance

Platform Height	18.47 m
Working Height	20.47 m
Horizontal Outreach	12.10 m
Up and Over Clearance	8.10 m
Swing	360 Degrees Continuous
Platform Capacity	230 kg
Platform Size	0.91 x 2.44 m
Platform Rotator	180 Degrees Hydraulic
Jib	1.83 m
Jib Range of Articulation	130 Degrees (+70, -60)
Weight	11,900 kg
Drive Speed	6.8 km/h
Gradeability	45%
Turning Radius	
Outside	3.56 m
Inside	1.68 m

### Standard Specifications

#### Power Source

Diesel Engine	Deutz D2011L04
Fuel Tank Capacity	113.6 L
Fuel Consumption	2.46 L/hr

#### Hydraulic System

Capacity	115.8 L
Auxiliary Power	12V-DC

#### Tyres

Standard	14 x 17.5 Foam-Filled
----------	-----------------------

### Standard Features

- 4WD & 4WS
- 180 Degree Hydraulic Platform Rotator
- Platform Console Machine Status Light Panel\*
- AC Generator including AC Outlets to Platform
- 4 Degree Tilt Alarm/Indicator Light
- Swing Out Engine Tray
- 12V-DC Auxiliary Power
- Hourmeter
- Proportional Controls
- Control ADE® System
- Lifting/Tie Down Lugs
- Horn
- Four-Wheel Hydrostatic Drive
- Oscillating Axle
- Operator Tool Tray
- Inward Self-Closing, Self-Locking Swing Gate
- Flashing Amber Beacon
- Motion Alarm
- Glow Plugs (Diesel Engines)

\* Provides indicator lights at platform control console for system distress, low fuel and foot switch status.



### Accessories & Options

- 0.91 x 1.83 m Platform
- 1/2 in. Air Line to Platform
- Light Package
- Platform Worklights
- Mesh to Mid-Rail
- Special Hydraulic Oils (Consult Factory)
- Spark Arresting Muffler
- Accessory Packages
  - SkyWelder® Package
  - SkyGlazier® Package
  - Nite Bright® Package
  - SkyGuard®
  - Pipe Rack
  - Cable Ladder Carrier
  - ClearSky®

Note: Some options may increase lead time, and some option combinations may not be available.

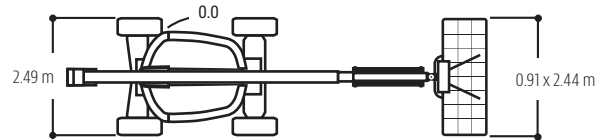
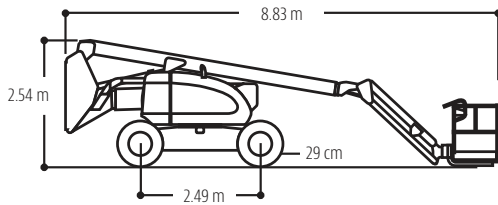
# 600AJ

ARTICULATING BOOM LIFT

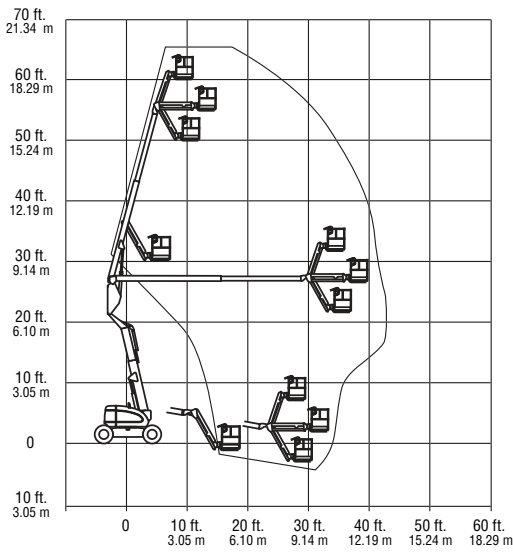


## Dimensions

All dimensions are approximate.



## Reach Diagram



## The JLG "1 & 5" Warranty

JLG Industries, Inc. backs its products with its exclusive "1 & 5" Warranty. We provide coverage on all products for one (1) full year and cover all specified major structural components for five (5) years. Due to continuous product improvements, we reserve the right to make specification and/or equipment changes without prior notification. This machine meets or exceeds AS/NZS 1418.10 2011 as originally manufactured for intended applications.



### JLG Industries (Australia)

358 Park Road  
Regents Park, NSW 2143  
Telephone 02 8718 6300  
Fax 02 8718 6377

[www.jlg.com.au](http://www.jlg.com.au)

An Oshkosh Corporation Company