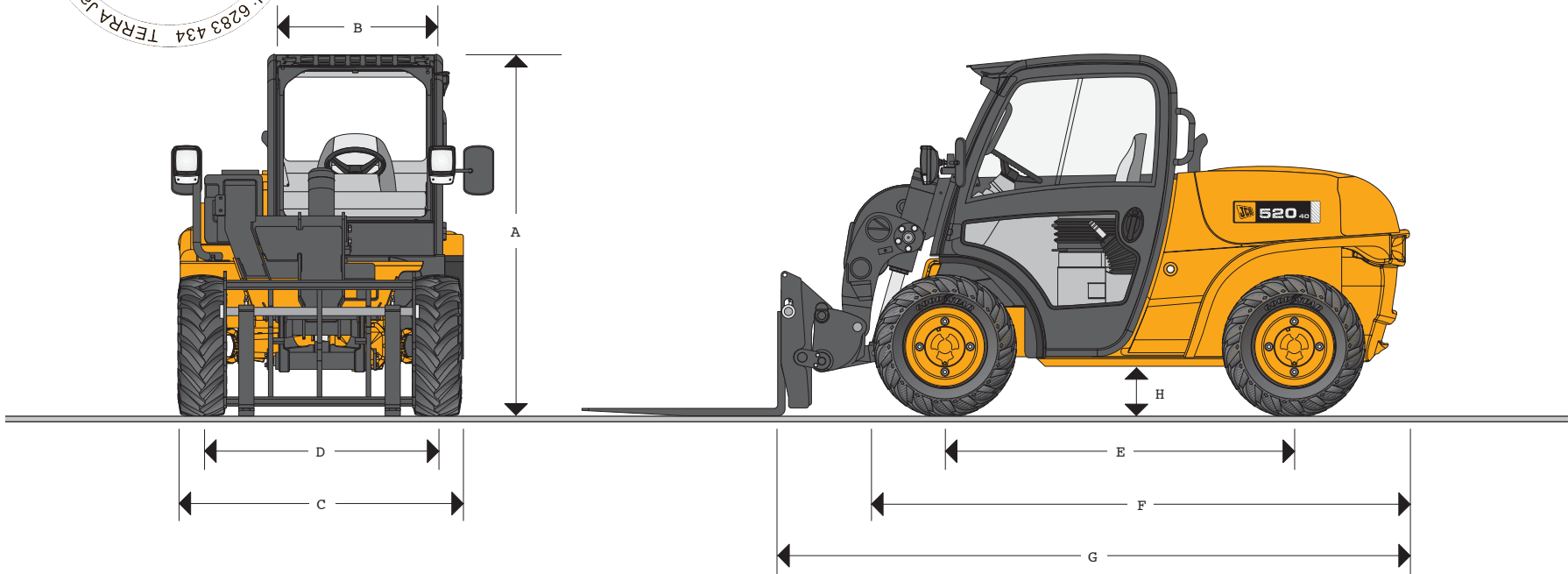


JCB LOADALL | 520-40



MAX. PAYLOAD: 4000lb (1800kg)
MAX. LIFT HEIGHT: 13ft 2in (4 meters)
MAX. HORSEPOWER: 50hp (37.5 kW)



STATIC DIMENSIONS

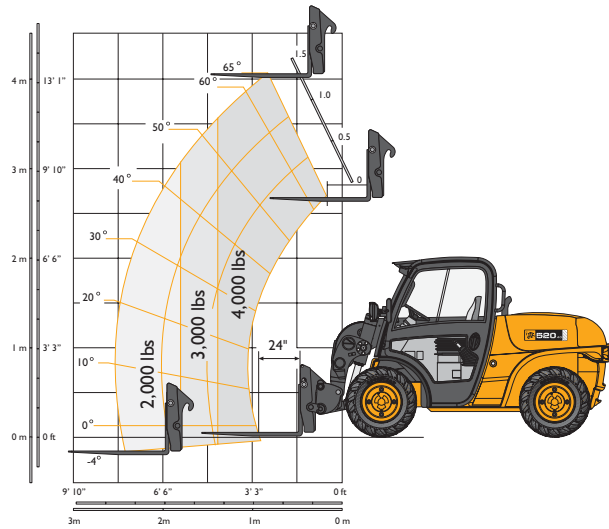
| | 10.00 x 16.5 12 ply Tires | 12.00 x 16.5 10 ply Tires |
|---------------------------------|---------------------------|---------------------------|
| | ft-in (m) | ft-in (m) |
| A Overall height | 6-6 (1.97) | 6-7 (2.01) |
| B Inside width of cab | 3-0 (0.92) | 3-0 (0.92) |
| C Width over tires (min) | 5-1 (1.56) | 5-8 (1.73) |
| D Front track | 4-3 (1.29) | 4-8 (1.41) |
| E Wheel base | 6-3 (1.90) | 6-3 (1.90) |

| | 10.00 x 16.5 12 ply Tires | 12.00 x 16.5 10 ply Tires |
|--|---------------------------|---------------------------|
| | ft-in (m) | ft-in (m) |
| F Overall length to front of tires | 9-6 (2.92) | 9-6 (2.92) |
| G Overall length to front of carriage | 11-1 (3.38) | 11-1 (3.38) |
| H Ground clearance | 0-11 (0.27) | 1-0 (0.3) |
| Outer turn radius over tires | 10-0 (3.05) | 10-0 (3.05) |
| Weight | lb (kg) | 9700 (4400) |

JCB LOADALL | 520-40



LIFT PERFORMANCE – 520-40



LIFT PERFORMANCE

| Machine Model | | Compact Tool Carrier | Skid Steer Quick Attach |
|------------------------------|------------|----------------------|-------------------------|
| Lift capacity at full height | lb (kg) | 4000 (1800) | 4000 (1800) |
| Lift capacity at full reach | lb (kg) | 2000 (900) | 2000 (900) |
| Max. lift height | ft-in (mm) | 13-3 (4035) | 13-2 (4025) |
| Reach at max. lift height | ft-in (mm) | 2-11 (890) | 2-8 (815) |
| Maximum reach forward | ft-in (mm) | 8-6 (2590) | 8-4 (2515) |

LOADER PERFORMANCE

| Machine Model | | Compact Tool Carrier | Skid Steer Quick Attach |
|---------------------------------|-----------------------------------|----------------------|-------------------------|
| Bucket rated capacity | yd ³ (m ³) | 0.92 (0.7) | 0.65 (0.5) |
| Breakout force | lbf (kgf) | 8157 (3700) | 7495 (3390) |
| Dump height (max) | ft-in (mm) | 11-8 (3555) | 11-7 (3500) |
| Dump angle at max height | degrees | 33 | 40 |
| Hinge pin height (max) | ft-in (mm) | 13-1 (4015) | 13-1 (4015) |
| Rollback angle at ground | degrees | 38 | 31 |
| Carriage rotation angle (total) | degrees | 140 | 140 |
| Bucket width | ft-in (mm) | 5-8 (1750) | 5-7 (1730) |



ENGINE

Latest technology and advanced design provides low fuel consumption, reduced noise, high torque and power output, total reliability and minimal maintenance.

Two-stage, dry type air filter with primary and safety elements.

Engine conforms with Tier 2 off-highway emissions regulations.

4 cylinder, 4 stroke, diesel engine, indirect injection. Naturally aspirated, 134 cu. in (2.2 liters) displacement, water cooled.

| Power rating @ 2800rpm | | |
|-------------------------|-------------|-----------|
| Gross SAE J1995 | hp (kW) | 50 (37.5) |
| Torque rating @ 2000rpm | | |
| SAE J1995 | lbf ft (Nm) | 104 (135) |



TRANSMISSION

Hydrostatic transmission.
 Closed loop variable displacement piston pump and 2 speed motor.
 Combined inching and braking pedal.
Front and rear drive axles: Epicyclic hub reduction type with mid mounted drop box. Permanent 4WS and 4WD.
 – Rear axle oscillation.
 – Optional front and rear limited slip diff axles.
 Travel speed – 12.4 mph (20 km/h)

BRAKES

Service brake: Hydraulically activated, disc brake on the transmission output shaft.
Parking brake: Manually actuated disc brake on the transmission output shaft.

BOOM AND CARRIAGE

Boom is manufactured from high tensile steel.
 Low maintenance, long life wear pads.
 JCB tool carrier parallel lift carriage with manual or hydraulic pin locking, accepts forkframe with integral pallet forks and a wide range of attachments.
Compact Tool Carrier: Compact Loadall compatibility.
Skid Steer Tool Carrier: Skid steer universal compatibility hitch.

SERVICE CAPACITIES

| | US gal (liters) |
|----------------|-----------------|
| Fuel tank | 16 (61) |
| Hydraulic tank | 8.7 (33) |
| Coolant | 2.1 (8) |

ELECTRICS

12 V negative ground, 95 AH heavy duty battery, 55 amp alternator.



HYDRAULICS

| Machine model | 520-40 | |
|--------------------------------------|----------------------|------------|
| Operating system pressure | psi (bar) | 3626 (250) |
| Flow at system pressure (@ 2800rpm) | US gal/min (ltr/min) | 15.8 (60) |
| Cycle times | seconds | |
| Boom raise | | 5.8 |
| Boom lower | | 4 |
| Extend | | 5.7 |
| Retract | | 4 |
| Bucket dump | | 3.7 |
| Bucket crowd | | 3.2 |
| Hydraulic flow at auxiliary couplers | US gal/min (ltr/min) | 15.8 (60) |

SAFETY CHECK VALVES

Fitted to tilt (roll back and dump), boom extension and lift cylinders.

CAB

Quiet, safe and comfortable cab conforms to ROPS ISO3471 and FOPS ISO 3449. Fitted with ash tray, cup holder and radio console. Tinted glass all round with laminated front and roof glass. Front window, wiper/washer and heater defroster. Opening door window. Visual warning system for coolant temperature, engine oil pressure, air cleaner, battery charge, transmission oil pressure, engine temperature, fuel gauge and hourmeter.
 Boom control lever incorporating forward/reverse switch. Floor mounted throttle and brake pedals. Adjustable deluxe suspension seat. Side mounted park brake lever.
 Safety canopy as above but with side screen, roof glass and rear glass. No door or front glass. Wipers and heater/defroster not applicable.

STEERING

Full power hydrostatic steering. Permanent 4WS with 32° lock front and rear axles provides exceptional manoeuvrability.

OPTIONS AND ACCESSORIES

Options: Road lights, work lights, rotating flashing beacon, fire extinguisher, limited slip diff front and rear axles, screen guard, sun blind, mechanical or hydraulic Compact tool carrier and Skid Steer tool carrier, battery isolator, top and rear window wiper/washer.
Attachments: Contact your local dealer for details of the comprehensive range.



JCB LOADALL | 520-40



JCB LOADALL | 520-40

A GLOBAL COMMITMENT TO QUALITY

JCB's total commitment to its products and customers has helped it grow from a one-man business into the World's 5th largest manufacturer of backhoe loaders, crawler excavators, wheeled excavators, telescopic handlers, wheel loaders, dump trucks, rough terrain fork lifts, industrial fork lifts, mini/midi excavators, skid steer loaders and tractors.

By making constant and massive investments in the latest production technology, the JCB factories have become some of the most advanced in the World.

By leading the field in innovative research and design, extensive testing and stringent quality control, JCB machines have become renowned all over the world for performance, value and reliability.

And with a global sales and service network of over 400 distributors and agents, the company exports over 70% of its production to all five continents.

Through setting the standards by which others are judged, JCB has become one of Britain's most impressive success stories.



JCB Headquarters Savannah, 2000 Bamford Blvd., Pooler, GA 31322. Tel: 912.447.2000. Fax: 912.447.2299. www.jcb.com

JCB reserves the right to change design, materials and/or specifications without notice. Specifications are applicable to units sold in the United States and Canada. The JCB logo is a registered trademark of J C Bamford Excavators Ltd.

USA 21083-3/05

Helping You Get
the Job Done!