

8FGK20

8FDK20

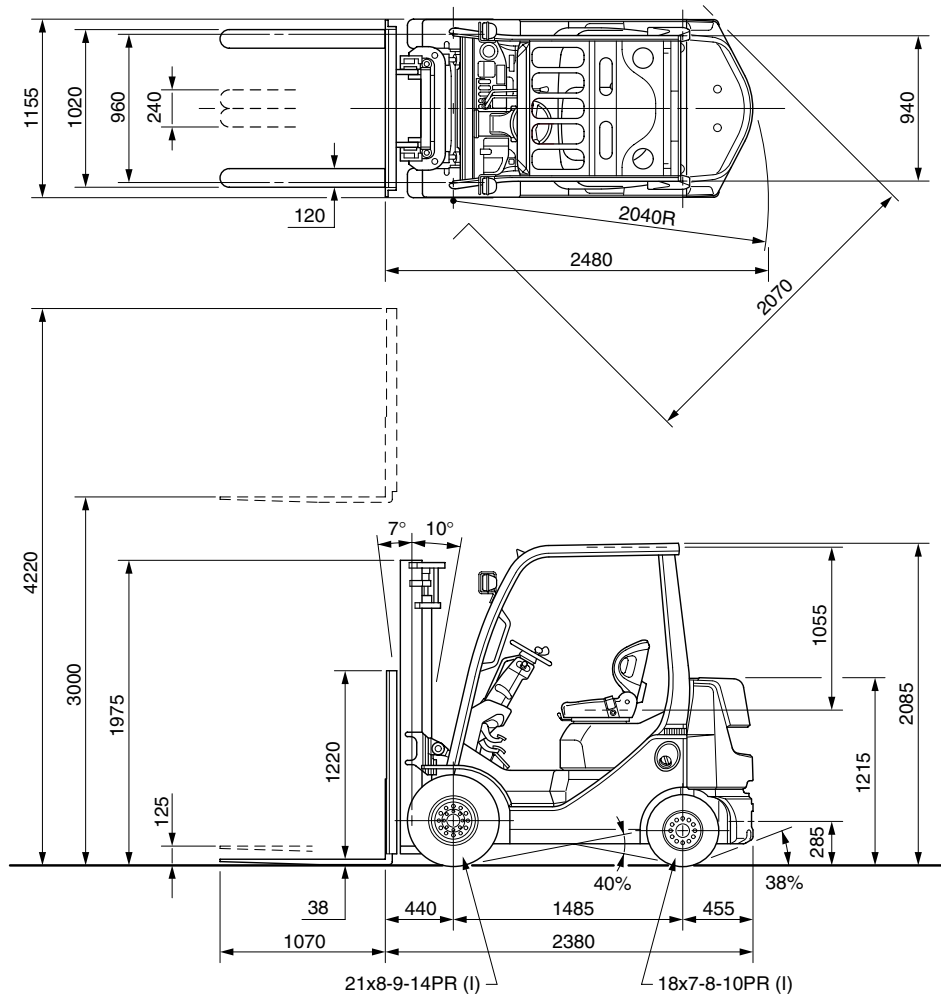
MAIN VEHICLE SPECIFICATIONS

1	Manufacturer				TOYOTA	TOYOTA
2	Model				32-8FGK20	62-8FDK20
3	Load Capacity			kg	2000	2000
4	Load Center			mm	500	500
5	Power Type				Gasoline	Diesel
6	Operator Position				Rider Seated	Rider Seated
7	Tire Type			Front/Rear	Pneumatic	Pneumatic
8	Wheels (x = driven)			Front/Rear	2x/2	2x/2
9	Maximum Fork Height (MFH)			mm	3000	3000
10	Free Lift			mm	125	125
13	Fork Size			T x W x L	38x120x1070	38x120x1070
	Fork Spread (Outside)			MAX./MIN.	1020/240	1020/240
14	Tilt Range			FWD/BWD	deg	7/10
15	Length to Fork Face				mm	2380
16	Overall Width				mm	1155
17	Mast Lowered Height				mm	1975
18	Mast Extended Height				mm	3920
19	Overhead Guard Height				mm	2085
21	Turning Radius (Outside)				mm	2040
22	Load Distance (Centerline of front axle to front face of forks)				mm	440
	Rear Overhang				mm	455
23	Basic Right Angle Stacking Aisle Width (Add load length and clearance)				mm	2480
24	Speeds	Travel, Max. (FWD/RVS)	Full Load	km/h	17.0/17.0	17.0/17.0
			No Load	km/h	17.5/17.5	17.5/17.5
25	Lifting		Full Load	mm/sec	600	580
			No Load	mm/sec	640	600
26	Lowering		Full Load	mm/sec	500	500
			No Load	mm/sec	500	500
28	Max. Drawbar Pull		Full Load	N (kg)	19000 (1940)	19500 (1990)
			No Load	N (kg)	7800 (800)	7800 (800)
	Max. Drawbar Pull at 1.5km/h *		Full Load	N (kg)	17400 (1770)	17500 (1780)
29	Gradeability at 1.5 km/h *		Full Load	% (tanθ)	35	34
30	Max. Gradeability *		Full Load	% (tanθ)	39	38
			No Load	% (tanθ)	20	20
32	Total Weight			kg	3150	3220
33	Weight Distribution	Full Load	Front	kg	4450	4490
			Rear	kg	700	730
34	No Load	Front	kg	1150	1190	
		Rear	kg	2000	2030	
35	Tires			Number	Front/Rear	2/2
36	Size	Front		21x8-9-14PR (I)	21x8-9-14PR (I)	
37		Rear		18x7-8-10PR (I)	18x7-8-10PR (I)	
38	Wheelbase			mm	1485	1485
39	Tread			Front	mm	960
				Rear	mm	940
	Backrest Height				mm	1220
	Overhead Guard Clearance				mm	1055
	Counterweight Height				mm	1215
	Drawbar Pin Center Height				mm	285
	Step Height/Floor Height				mm	380/615
40	Underclearance			Min. with Load	mm	95
41	Center of Wheelbase				mm	120
	Grade Clearance			Frame/Counterweight	% (tanθ)	40/38
42	Brake			Service (Foot)		Hydraulic
43	Parking					Foot
45	Battery			Voltage/Capacity (5HR)	V/AH	12/27
49	Make/Model				TOYOTA/4Y	TOYOTA/1DZ-II
50	Rated Horsepower/r.p.m.				kW (JIS ps)	40/2400 (54/2400)
51	Rated Torque/r.p.m.				N-m (JIS kg-m)	161/1800 (16.4/1800)
52	Internal Combustion Engine			Number of Cylinder		4
	Piston Displacement				cc	2237
	Fuel Tank Capacity				liter	55
55	Transmission			Type		Powershift
	Stage			FWD/RVS		1/1
57	Operating Pressure			For Attachments	Mpa (kg/cm ²) <psi>	14.7 (150) <2100>

NOTE: * Computed values.

DIMENSIONAL DRAWINGS

8FGK/8FDK20



UNDERCLEARANCE

Mast	-----	
Drive Axle	-----	100
Steer Axle	-----	130
Center of Wheelbase	-----	120
Counterweight	-----	125

SPECIAL MAST

Wide Visible Full-Free Lift Two-Stage Mast (FV), Wide Visible Full-Free Lift Three-Stage Mast (FSV)

Model		8FGK20	8FDK20	8FGK20	8FDK20
Type of Mast		FV		FSV	
PERFORMANCE					
Speeds	Lifting	Full Load	mm/sec	560	550
		No Load	mm/sec	600	585
	Lowering	Full Load	mm/sec	480	480
		No Load	mm/sec	420	450
DIMENSIONS					
Load Distance (Centerline of front axle to front face of forks)		mm		450	470

RATED CAPACITIES

8FGK/8FDK20

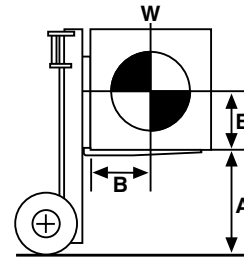
Unit: kg (W)

V, FV Mast (PN)

A (mm)	4000	4500	5000
500	2000	1950	1850
600	1800	1760	1670
700	1640	1600	1520
B (mm)	800	1510	1470
	900	1400	1290
	1000	1300	1200
	1100	1220	1190
	1200	1140	1060

V, FV Mast (PSC)

A (mm)	4000	4500	5000
500	2000	2000	2000
600	1800	1800	1800
700	1640	1640	1640
B (mm)	800	1510	1510
	900	1400	1400
	1000	1300	1300
	1100	1220	1220
	1200	1140	1140



A: Max. Fork Height
B: Load Center
W: Capacity

FSV Mast (PN)

A (mm)	3700	4000	4300	4500	4700	5000	5500	6000
500	2000	1950	1900	1850	1850	1450	1200	850
600	1810	1760	1720	1670	1670	1310	1080	760
700	1650	1610	1570	1530	1530	1200	990	700
B (mm)	800	1520	1480	1440	1400	1400	1100	910
	900	1410	1370	1340	1300	1300	1020	840
	1000	1310	1280	1240	1210	1210	950	780
	1100	1230	1200	1160	1130	1130	890	730
	1200	1150	1120	1090	1060	1060	830	690

FSV Mast (PSC)

A (mm)	4700	5000	5500	6000
500	2000	1600	1350	1000
600	1810	1440	1220	900
700	1650	1320	1110	820
B (mm)	800	1520	1210	760
	900	1410	1120	700
	1000	1310	1050	650
	1100	1230	980	610
	1200	1150	920	570

MAST SPECIFICATIONS & RATED CAPACITIES

Wide Visible Mast (V), Wide Visible Full-Free Lift Two-Stage Mast (FV), Wide Visible Full-Free Lift Three-Stage Mast (FSV)

8FGK/8FDK20

Mast Type	Maximum Fork Height	Overall Height				Free Lift		Single Tire			
		Lowered	Extended		Without Load Backrest	With Standard Load Backrest	Tilt Range		Load Capacity at 500 mm LC		
			Without Load Backrest	With Standard Load Backrest			FWD	BWD	Pneumatic Tire	Pneumatic-Shaped Cushion Tire	
											mm
V	2700	1825	3365	3920	120	120	7	10	2000	2000	
	3000	1975	3665	4220	120	120	7	10	2000	2000	
	3300	2125	3965	4520	120	120	7	10	2000	2000	
	3500	2225	4165	4720	120	120	7	10	2000	2000	
	3700	2385	4365	4920	120	120	7	10	2000	2000	
	4000	2575	4665	5220	120	120	7	10	2000	2000	
	4500	2825	5165	5720	120	120	7	5	1950	2000	
5000	3075	5665	6220	120	120	7	5	1850	2000		
FV	3000	1975	3560	4165	1365	760	7	10	2000	2000	
	3300	2125	3860	4425	1515	950	7	10	2000	2000	
	3500	2225	4060	4625	1615	1050	7	10	2000	2000	
	3700	2385	4260	4825	1775	1210	7	10	2000	2000	
	4000	2575	4560	5125	1965	1400	7	10	2000	2000	
FSV	3700	1775	4350	4910	1125	560	7	5	2000	2000	
	4000	1875	4650	5210	1225	660	7	5	1950	2000	
	4300	1975	4950	5510	1325	760	7	5	1900	2000	
	4500	2045	5150	5710	1395	830	7	5	1850	2000	
	4700	2125	5350	5910	1475	910	7	5	1850	2000	
	5000	2225	5650	6210	1575	1010	7	5	1450	1600	
	5500	2385	6150	6710	1735	1170	7	5	1200	1350	
	6000	2575	6650	7210	1925	1360	7	5	850	1000	

NOTE: Height of standard load backrest is 1220 mm.