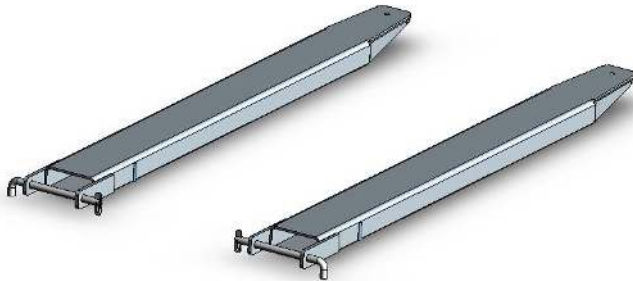


## Type FE Fork Extension Slippers

The type FE Fork Extension Slippers have been designed with a slim profile to extend the versatility of your Lift Truck. These Slippers have been designed and manufactured in accordance with AS2359.15.

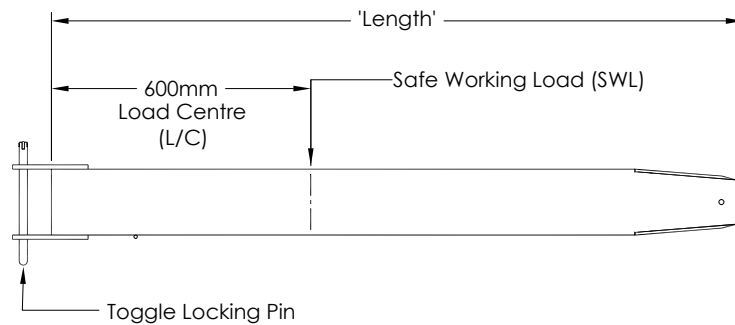
In accordance with AS2359.15 Slippers used for general usage should be no longer than 167% of the supporting Tine's length. If the Slippers are longer than 167%, then the usage of those Slippers shall be restricted to their specified application.



(Type FE2-16 Slipper Pair shown)

### SPECIFICATIONS:

- Made of High Tensile Grade Steel
- Zinc Plated for added Protection
- High Safe Working Load (SWL) Rating
- Supplied with Toggle Locking Pins
- Fitted with Rating Plate
- Supplied with Instructions



TYPE	'Length' (mm)	To Suit Max. Tine Size (mm)	To Suit Min. Tine Length (mm)	Weight per Pair (kg)	Horizontal C of G (mm)	SWL per Pair at 600mm L/C (kg)
FE1-16	1600	100 x 45	960	50	724	3000
FE1-18	1800	100 x 45	1080	56	824	3000
FE1-21	2100	100 x 45	1260	66	973	3000
FE1-24	2400	100 x 45	1440	75	1123	3000
FE2-16	1600	130 x 50	960	60	733	4500
FE2-18	1800	130 x 50	1080	66	833	4500
FE2-21	2100	130 x 50	1260	78	982	4500
FE2-24	2400	130 x 50	1440	88	1132	4500
FE3-16	1600	155 x 55	960	91	741	6500
FE3-18	1800	155 x 55	1080	102	841	6500
FE3-21	2100	155 x 55	1260	119	991	6500
FE3-24	2400	155 x 55	1440	136	1140	6500
FE3-30	3000	155 x 55	1800	170	1440	6500
FE4-18	1800	160 x 65	1080	133	836	8500
FE4-21	2100	160 x 65	1260	155	986	8500
FE4-24	2400	160 x 65	1440	177	1136	8500
FE4-30	3000	160 x 65	1800	221	1436	8500